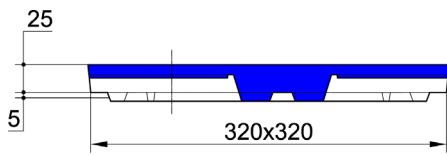


BOITE PLUVIALE Int. 25x25 A JOINTS

Modèle
Breveté



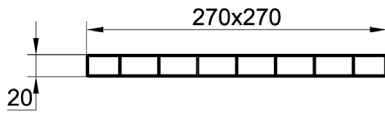
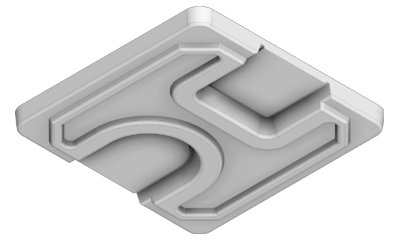
COUVERCLE ARME

Code article : 244026

Poids : 6,5 Kg

Conditionnement : 18 / palette

Poids palette : 288 Kg

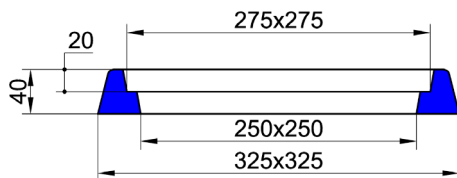
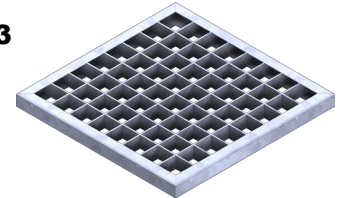


GRILLE GALVA. 27x27 MAILLES 3x3

Code article : 010038

Poids : 1,2 Kg

Conditionnement : Unité

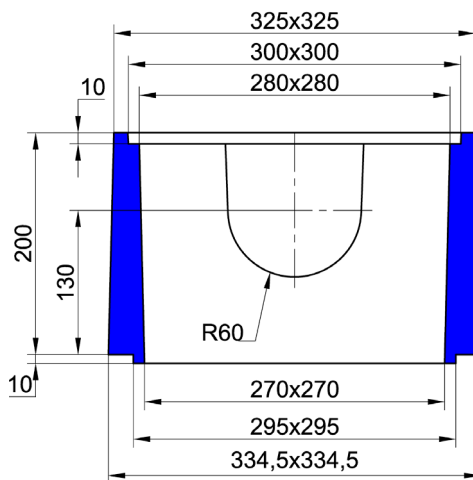
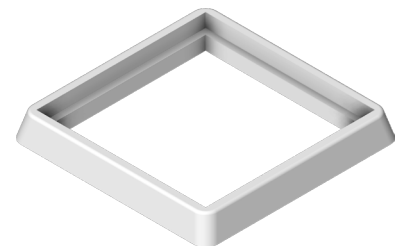


CADRE BETON SANS GRILLE

Code article : 244090

Poids : 4,4 Kg

Conditionnement : Unité



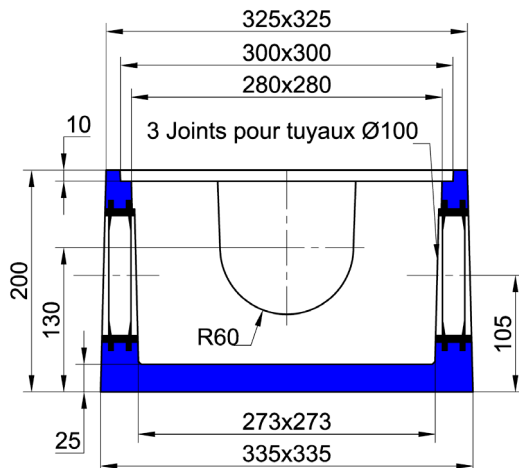
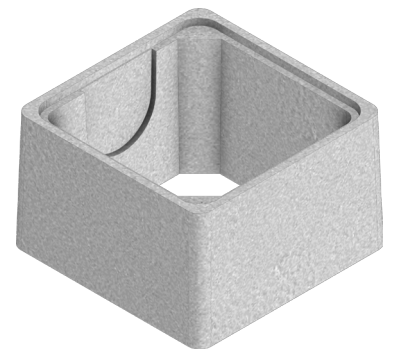
REHAUSSE H : 20 D.I.

Code article : 244027

Poids : 16 Kg

Conditionnement : 18 / palette

Poids palette : 288 Kg



BOITE PLUVIALE Int. 25x25 A JOINTS

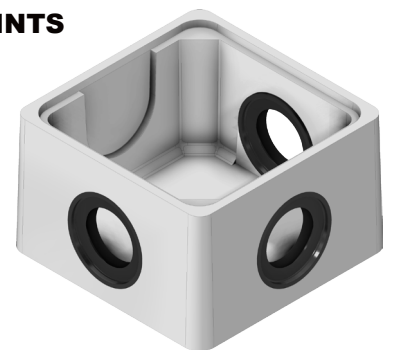
Code article : 244025

Poids : 18 Kg

Conditionnement :

18 (sans couvercles) / palette

Poids palette : 324 Kg



SAS R. THEBAULT

Siège social et usine :

8, rue des Glénan - ZI de Saint-Eloi - 29800 PLOUEDERN

Tel. 02 98 21 63 63 - Fax : 02 98 21 34 11

Usines à : Mauron (56430) et Verneuil S/Avre (27130)



Version du 25/04/2018