

SPARE PARTS

FOR COMPRESSORS MODELS :

TRE2210030MG TRE2210030TG

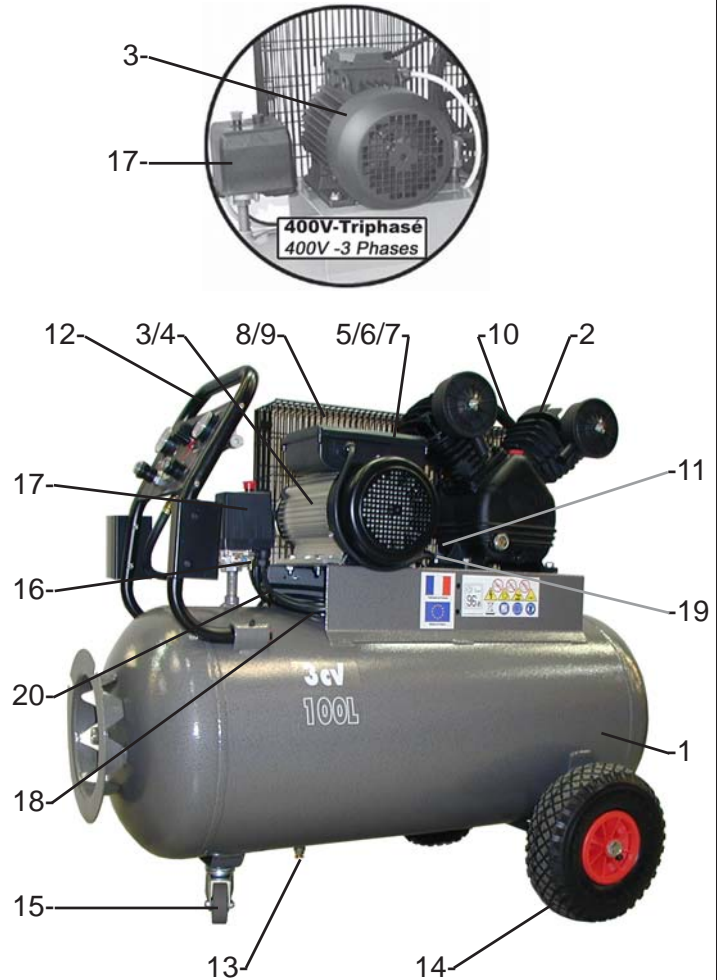
FEATURES :

MODEL		TRE2210030MG	TRE2210030TG
Voltage	Volt	230V / 1P	400V / 3P
Power supply	kW/HP	2,2 / 3	2,2 / 3
Tank capacity	liter	100	100
Maximum pressure	bar	9	9
Number of piston		2	2
Number of stage		1	1
Air displacement	l/min	347	347
Air delivery at 7 bar	l/min	270	270
Revolution per minute	RPM	1140	1140
Dimensions	cm	106x50x80	106x50x80
Net weight	kg	71,5	74,5

Nota : You will find all compressor characteristics on the identification sticker.

COMPONENTS :

REF	DESCRIPTION	CODE	CODE
1	Tank 100 L - 11 bar	22503PTRE	22503PTRE
2	V pump	VF305	VF305
3	Electrical motor 230V - 50Hz	103030N	303030
4	Fly wheel Ø 100 x 24	10024	10024
5	Thermal overload	2-YL90L-002	-----
6	Capacitor (During use)	2-YL90L-004	-----
7	Capacitor (To start)	2-YL90L-003	-----
8	Belt guard	CMK9200305	CMK9200305
9	Plastic clip	470004	470004
10	Belt	A45	A45
11	Aluminium tube	CU12	CU12
12	Panel control handle (See overleaf)	PTR001	PTR001
13	Drain plug 1/4"	1940M	1940M
14	Wheel Ø 260 x 20 (See overleaf)	26020P	26020P
15	Castor wheel	RP60	RP60
16	Safety valve 11 bar	191910M	191910M
17	Pressure switch	P1041	MDR316634
18	Decompression tube	RILSAN	RILSAN
19	No return valve 1/2"	1752SVRC	1752MC
20	Electrical cable	2516	C415



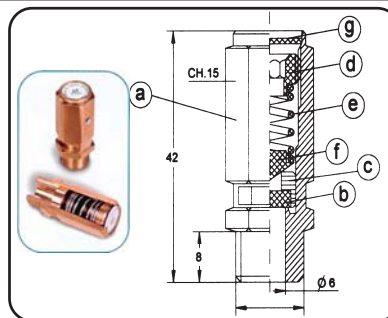
POWAIR INDUSTRIE

**AUTOMATIC SAFETY VALVE CERTIFICATE
FOR SIMPLE PRESSURE TANKS CATEGORY 1**

Réf: 191910M

TECHNICAL CHARACTERISTICS:

- Manufacturer's logo 
- PT = Setting pressure 11 bar
- Q = Maximum opening flow 2513 l / min
- Input threading : 1/4" gaz
- Input pressure rated : 25 bar
- Opening diameter : 6 mm
- Opening area : 28,26 mm²
- Fluid type : Compressed air
- Working temperature : NBR -10°C +90°C



USED MATERIAL:

- a -Body valve :BRASS UNI EN 12164
- b -Rubber gasket :NBR - VITON
- c -Obturating :BRASS UNI EN 12164
- d -Spring stop :BRASS UNI EN 12164
- e -Spring :STEEL C98 UNI 3823
- f -Conical tapped :BRASS UNI EN 12164
- g -Plate :ALUMINIUM

- The setting of this safety valve, carried out at T°=20°C, guarantees an opening beginning and a maximum outflow according to the indicated values in the technical characteristics.
- These values are recalled on the identification sticker set on the security valve.
- **Identification of the marking:** PT= Setting pressure D= Opening diameter and Q = Flow to full opening for the compressed air.
- The used materials fit to good functioning according to the working conditions and the aforementioned fluids.
- The technical data that identify the safety valve are indicated on the plate.
- The mechanical locking of the setting is obtained by the application of a glue-sealing (Loctite 270).
- The setting of the safety valve is secured by a final punching on the body of the safety valve.
- Satisfactory results were obtained after the final check and after the hydraulic test carried out at 37,5 bar.

CE

F.MURET

"CE" EUROPEAN COMPLIANCE DECLARATION

WE DECLARE UNDER OUR RESPONSABILITY THAT THIS VALVE COMPLIES WITH THE SAFETY RULES REQUIRED IN KEEPING WITH:

European directive : 2006/42/CE - 97/23/CE (This soupape was classified according to the annex II § 2 and therefore evaluated according to unit A)

This security valve is uniquely destined to equip simple pressure tanks or equipments category 1.

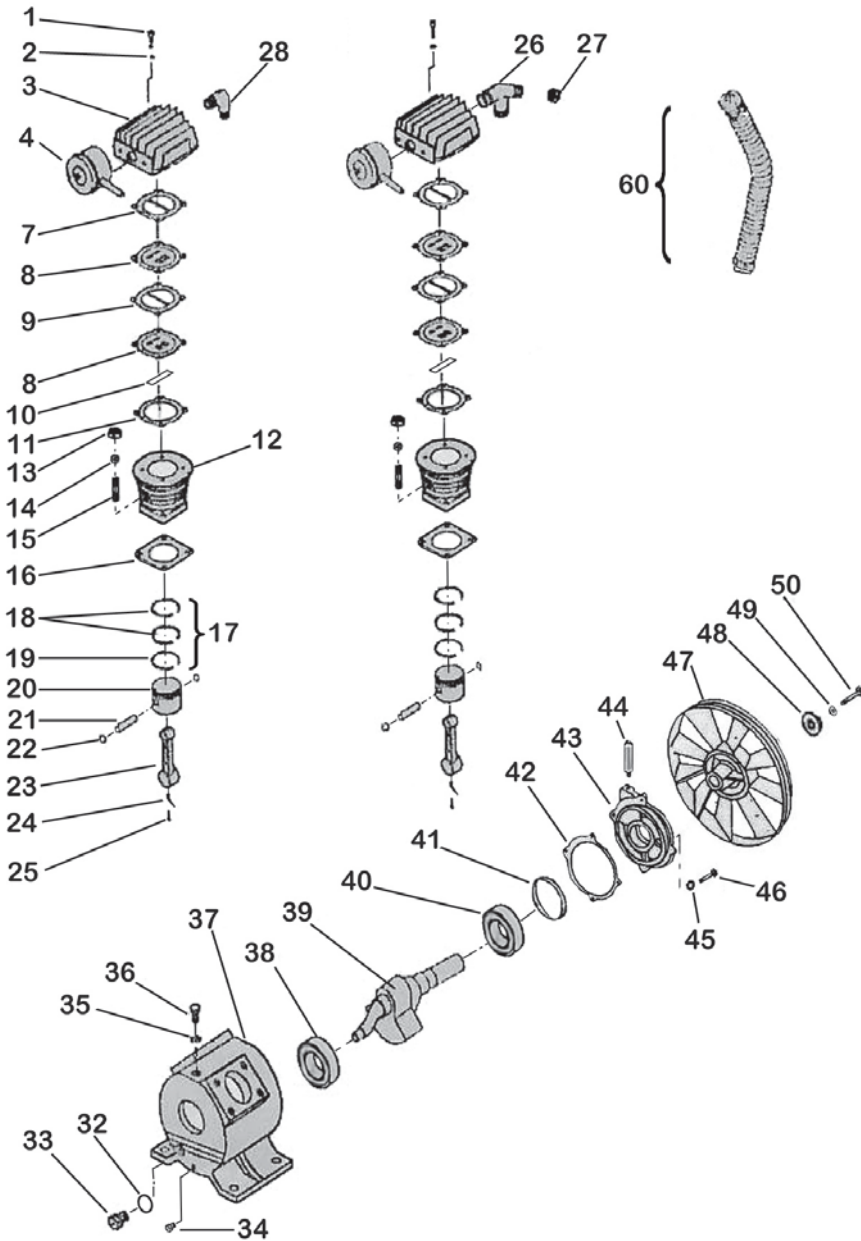
President

Buc le 02-07-2012 *Applied rule* : ISO 4126-1

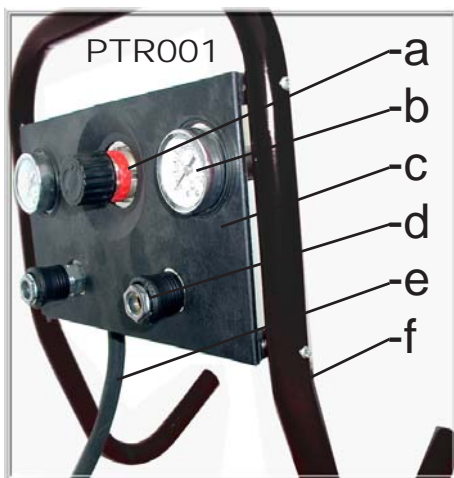
PRODIG S.A. 500 rue Clément Ader - 78532 BUC Cedex FRANCE

VF305

Compresseur monoétage - Single-stage compressor
 Compressore monostadio - Einstufige Kompressor
 Compressor mono estadio



REF	CODE	DESCRIPTION
03	VF305003	Cylinder head
04	VF305004	Air filter 1/2"
07*	VF305007	Gasket, cylinder head
08	VF305008	Valve seat set (Qty:2)
09*	VF305009	Gasket, vave seat
10	VF305010	Valve plate ser (Qty:2)
11*	VF305011	Gasket, cylinder
12	VF305012	Cylinder
13	VF305013	Nut
14	VF305014	Plain washer
15	VF305015	Stud
16	VF305016	Gasket, crankcase
17	VF305KS	Piston ring set (2 sealing +1 wiper)
20	VF305020	Piston
21	VF305021	Piston pin
22	VF305022	Piston circlip
23	VF305023	Connecting rod
24	VF305024	Splashing needle
25	VF305025	Bolt (Splashing needle)
26	VF305026	3 ways joint
28	VF305028	90° joint
32	VF305032	Oil leveler seal
33	VF305033	Oil leveler
34	VF305034	Drain plug
35-36	VF305035	Oil fill
37	VF305037	Crankcase
38	VF305038	Rear bearing
39	VF305039	Crankshaft
40	VF305040	Front bearing
41	VF305041	SPI seal
42	VF305042	Gasket, (Bearing cover)
43	VF305043	Bearing cover
44	VF305044	Breather
45	VF305045	Washer, (Bearing cover)
46	VF305046	Screw, (Bearing cover)
47	VF305047	Pulley 260 - 1A
48	VF305048	Washer, (Pulley)
50	VF305050	Screw, (Pulley)
60	VF305060	Complete cooling flange+nuts
	VF305KJ	Seal set including: ref: 7-9-11 (For 1 cylinder)



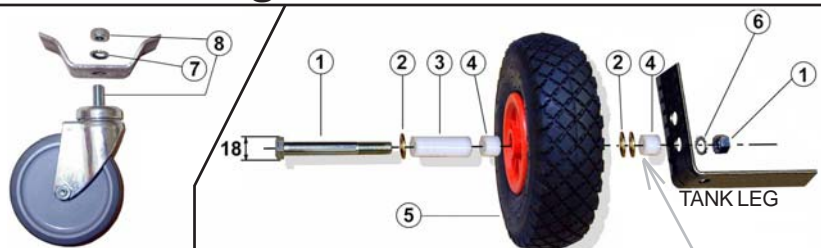
PTR001 Handle spare part

REF	CODE	DESCRIPTION
a	ZB020VL59	Pressure reducer
b	1099	Pressure gauge Ø 40
c	ZB020VL63	Panel
d	3015CM	Quick coupler
e	ZB020VL66	Flexible connecting tube
f	ZB020VL64	Carrying handle

IMPORTANT :

To order the spare parts of the compressor, please quote the mark number VF305 with the code **Ex:** For cylinder VF305, Gasket set code **VFR305KJ**

Setting wheels on tank



REF	CODE	DESCRIPTION
1	B12100	Bolt (screw H M12x100 + nut Hu M12)
2	RP12	Plate washer MN Ø12
3	953350	Long spacer 20 x 59 x 12
4	951512	Short spacer 20 x 15 x 12,2
5	26020P	Inflatable wheel Ø 260mm x 20mm MAXIMUM PRESSURE 25 PSI (1,7 bar)
6	RE12	Spring washer AZ12
7	RE10	Spring washer AZ10
8	BTR1020	Bolt CHc M10 x 20 + Nut Hu M10

ASSEMBLY
IN LOWER
POSITION