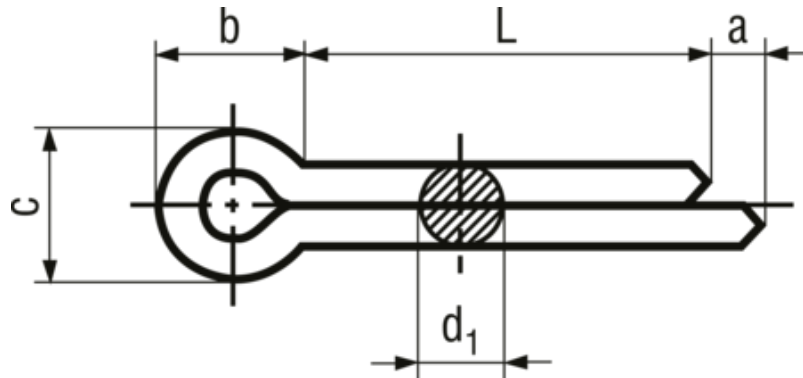


# Goupilles fendues

## BN 912



Matière

Acier

Surface

zingué-bleu

Standard

DIN 94 (Norme abrogée), ISO 1234, ~UNI 1336, ~ČSN 021781

Article n°	d1	L	d1 min	d1 max	c min	c max	a max	b~
1363557	1	6	0.8	0.9	1.6	1.8	1.6	3
1363565	1	8	0.8	0.9	1.6	1.8	1.6	3
1363573	1	10	0.8	0.9	1.6	1.8	1.6	3
1363581	1	12	0.8	0.9	1.6	1.8	1.6	3
1363603	1	16	0.8	0.9	1.6	1.8	1.6	3
1363638	1	20	0.8	0.9	1.6	1.8	1.6	3
1363646	1	25	0.8	0.9	1.6	1.8	1.6	3
1363654	1	32	0.8	0.9	1.6	1.8	1.6	3
1363662	1	36	0.8	0.9	1.6	1.8	1.6	3
1415344	1.2	8	0.9	1	1.7	2	2.5	3
1415352	1.2	10	0.9	1	1.7	2	2.5	3
1415360	1.2	12	0.9	1	1.7	2	2.5	3
1415379	1.2	16	0.9	1	1.7	2	2.5	3
1415395	1.2	20	0.9	1	1.7	2	2.5	3
1415417	1.2	25	0.9	1	1.7	2	2.5	3
1415441	1.6	6	1.3	1.4	2.4	2.8	2.5	3.2
1363670	1.6	8	1.3	1.4	2.4	2.8	2.5	3.2
1363689	1.6	10	1.3	1.4	2.4	2.8	2.5	3.2
1363697	1.6	12	1.3	1.4	2.4	2.8	2.5	3.2
8151555	1.6	14	1.3	1.4	2.4	2.8	2.5	3.2
1363700	1.6	16	1.3	1.4	2.4	2.8	2.5	3.2
1363727	1.6	20	1.3	1.4	2.4	2.8	2.5	3.2
1363743	1.6	25	1.3	1.4	2.4	2.8	2.5	3.2
1363751	1.6	32	1.3	1.4	2.4	2.8	2.5	3.2

Article n°	d1	L	d1 min	d1 max	c min	c max	a max	b~
1363778	1.6	36	1.3	1.4	2.4	2.8	2.5	3.2
1363786	1.6	40	1.3	1.4	2.4	2.8	2.5	3.2
1415468	2	6	1.7	1.8	3.2	3.6	2.5	4
1363794	2	10	1.7	1.8	3.2	3.6	2.5	4
1363808	2	12	1.7	1.8	3.2	3.6	2.5	4
8045054	2	14	1.7	1.8	3.2	3.6	2.5	4
1363816	2	16	1.7	1.8	3.2	3.6	2.5	4
1363824	2	18	1.7	1.8	3.2	3.6	2.5	4
1363832	2	20	1.7	1.8	3.2	3.6	2.5	4
1415484	2	22	1.7	1.8	3.2	3.6	2.5	4
1363840	2	25	1.7	1.8	3.2	3.6	2.5	4
1415492	2	28	1.7	1.8	3.2	3.6	2.5	4
1363859	2	32	1.7	1.8	3.2	3.6	2.5	4
1363867	2	36	1.7	1.8	3.2	3.6	2.5	4
1363875	2	40	1.7	1.8	3.2	3.6	2.5	4
1363883	2	45	1.7	1.8	3.2	3.6	2.5	4
1363905	2.5	10	2.1	2.3	4	4.6	2.5	5
1363913	2.5	12	2.1	2.3	4	4.6	2.5	5
8045062	2.5	14	2.1	2.3	4	4.6	2.5	5
1363921	2.5	16	2.1	2.3	4	4.6	2.5	5
1363948	2.5	18	2.1	2.3	4	4.6	2.5	5
1363956	2.5	20	2.1	2.3	4	4.6	2.5	5
1437852	2.5	22	2.1	2.3	4	4.6	2.5	5
1363964	2.5	25	2.1	2.3	4	4.6	2.5	5
1437860	2.5	28	2.1	2.3	4	4.6	2.5	5
1363972	2.5	32	2.1	2.3	4	4.6	2.5	5
1363980	2.5	36	2.1	2.3	4	4.6	2.5	5
1363999	2.5	40	2.1	2.3	4	4.6	2.5	5
1364006	2.5	45	2.1	2.3	4	4.6	2.5	5
1364014	2.5	50	2.1	2.3	4	4.6	2.5	5
1364022	3.2	10	2.7	2.9	5.1	5.8	3.2	6.4
1364030	3.2	12	2.7	2.9	5.1	5.8	3.2	6.4
1364049	3.2	16	2.7	2.9	5.1	5.8	3.2	6.4
1364057	3.2	18	2.7	2.9	5.1	5.8	3.2	6.4
1364065	3.2	20	2.7	2.9	5.1	5.8	3.2	6.4
1437887	3.2	22	2.7	2.9	5.1	5.8	3.2	6.4
1364073	3.2	25	2.7	2.9	5.1	5.8	3.2	6.4
1437895	3.2	28	2.7	2.9	5.1	5.8	3.2	6.4
1364081	3.2	32	2.7	2.9	5.1	5.8	3.2	6.4
1364103	3.2	36	2.7	2.9	5.1	5.8	3.2	6.4
1364111	3.2	40	2.7	2.9	5.1	5.8	3.2	6.4
1364138	3.2	45	2.7	2.9	5.1	5.8	3.2	6.4
1364146	3.2	50	2.7	2.9	5.1	5.8	3.2	6.4
1437909	3.2	56	2.7	2.9	5.1	5.8	3.2	6.4
1364154	3.2	63	2.7	2.9	5.1	5.8	3.2	6.4
8045089	3.2	71	2.7	2.9	5.1	5.8	3.2	6.4
8151563	3.2	80	2.7	2.9	5.1	5.8	3.2	6.4
1437917	4	16	3.5	3.7	6.5	7.4	4	8
1437925	4	18	3.5	3.7	6.5	7.4	4	8
1364251	4	20	3.5	3.7	6.5	7.4	4	8

Article n°	d1	L	d1 min	d1 max	c min	c max	a max	b~
1437933	4	22	3.5	3.7	6.5	7.4	4	8
1364278	4	25	3.5	3.7	6.5	7.4	4	8
1437941	4	28	3.5	3.7	6.5	7.4	4	8
1364286	4	32	3.5	3.7	6.5	7.4	4	8
1364294	4	36	3.5	3.7	6.5	7.4	4	8
1364308	4	40	3.5	3.7	6.5	7.4	4	8
1364316	4	45	3.5	3.7	6.5	7.4	4	8
1364324	4	50	3.5	3.7	6.5	7.4	4	8
1437968	4	56	3.5	3.7	6.5	7.4	4	8
1364332	4	63	3.5	3.7	6.5	7.4	4	8
1364340	4	71	3.5	3.7	6.5	7.4	4	8
1364359	4	80	3.5	3.7	6.5	7.4	4	8
1437976	4	100	3.5	3.7	6.5	7.4	4	8
1438018	5	20	4.4	4.6	8	9.2	4	10
1364375	5	25	4.4	4.6	8	9.2	4	10
8068941	5	28	4.4	4.6	8	9.2	4	10
1364383	5	32	4.4	4.6	8	9.2	4	10
1364391	5	36	4.4	4.6	8	9.2	4	10
1364405	5	40	4.4	4.6	8	9.2	4	10
1364413	5	45	4.4	4.6	8	9.2	4	10
1364421	5	50	4.4	4.6	8	9.2	4	10
5515659	5	56	4.4	4.6	8	9.2	4	10
1364448	5	63	4.4	4.6	8	9.2	4	10
1364456	5	71	4.4	4.6	8	9.2	4	10
1364464	5	80	4.4	4.6	8	9.2	4	10
1437984	5	90	4.4	4.6	8	9.2	4	10
1437992	5	100	4.4	4.6	8	9.2	4	10
1364472	6.3	32	5.7	5.9	10.3	11.8	4	12.6
1364480	6.3	36	5.7	5.9	10.3	11.8	4	12.6
1364499	6.3	40	5.7	5.9	10.3	11.8	4	12.6
1364502	6.3	45	5.7	5.9	10.3	11.8	4	12.6
1364510	6.3	50	5.7	5.9	10.3	11.8	4	12.6
5519572	6.3	56	5.7	5.9	10.3	11.8	4	12.6
1364529	6.3	63	5.7	5.9	10.3	11.8	4	12.6
1364537	6.3	71	5.7	5.9	10.3	11.8	4	12.6
1364545	6.3	80	5.7	5.9	10.3	11.8	4	12.6
1445065	6.3	90	5.7	5.9	10.3	11.8	4	12.6
1416324	6.3	100	5.7	5.9	10.3	11.8	4	12.6
1438034	6.3	125	5.7	5.9	10.3	11.8	4	12.6
1438050	8	40	7.3	7.5	13.1	15	4	16
1438069	8	45	7.3	7.5	13.1	15	4	16
1416332	8	50	7.3	7.5	13.1	15	4	16
5505237	8	56	7.3	7.5	13.1	15	4	16
1364553	8	63	7.3	7.5	13.1	15	4	16
1364561	8	71	7.3	7.5	13.1	15	4	16
1364588	8	80	7.3	7.5	13.1	15	4	16
1438077	8	90	7.3	7.5	13.1	15	4	16
1364596	8	100	7.3	7.5	13.1	15	4	16
1438085	8	112	7.3	7.5	13.1	15	4	16
1416340	8	125	7.3	7.5	13.1	15	4	16

Article n°	d1	L	d1 min	d1 max	c min	c max	a max	b~
8069794	10	45	9.3	9.5	16.6	19	6.3	20
1438093	10	50	9.3	9.5	16.6	19	6.3	20
5323782	10	56	9.3	9.5	16.6	19	6.3	20
1416359	10	63	9.3	9.5	16.6	19	6.3	20
1416367	10	71	9.3	9.5	16.6	19	6.3	20
1416375	10	80	9.3	9.5	16.6	19	6.3	20
1438107	10	90	9.3	9.5	16.6	19	6.3	20
1416383	10	100	9.3	9.5	16.6	19	6.3	20
1438115	10	112	9.3	9.5	16.6	19	6.3	20
1416391	10	125	9.3	9.5	16.6	19	6.3	20
8062293	10	140	9.3	9.5	16.6	19	6.3	20
1438123	13	71	12.1	12.4	21.7	24.8	6.3	26
1438131	13	80	12.1	12.4	21.7	24.8	6.3	26
1438158	13	90	12.1	12.4	21.7	24.8	6.3	26
1438166	13	100	12.1	12.4	21.7	24.8	6.3	26
1438174	13	112	12.1	12.4	21.7	24.8	6.3	26
1438182	13	125	12.1	12.4	21.7	24.8	6.3	26